

ATS

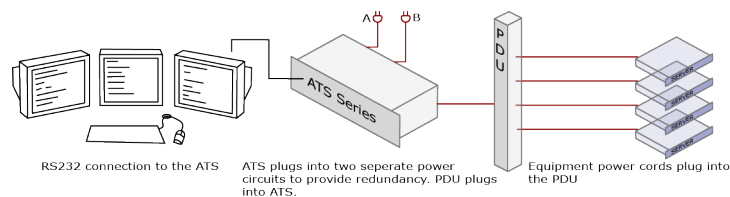
Transfer Switch Circuit Metering

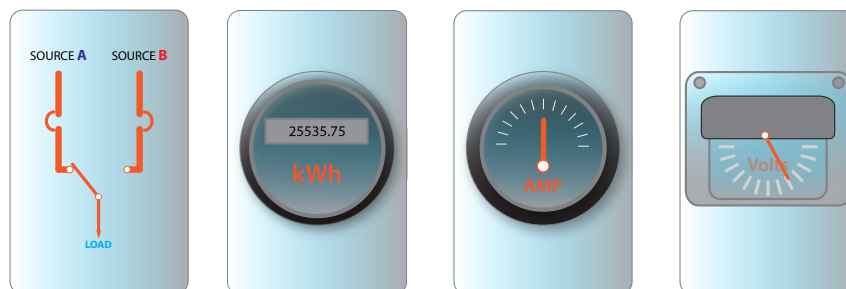


- Transfer time under 15ms
- Single phase solutions up to 32 amps
- Status and Alarm Display
- Local Console Interface

Providing redundancy on the power circuit level is critical to maintaining uptime. The ATS Series provides a simple and reliable solution for automatically sensing power loss and seamlessly switching to a back-up circuit.

BayTech ATS transfer switch line offers a unique approach to performing the transfer by completely severing the connection between the source and load then waiting for the zero-crossing to perform the transfer. This is the driving force behind being able to perform out-of-phase transfers with a low cost solution.





MODEL	Voltage	Input-Amps	kW	Plug Type	Recept Qty	Receptacles	Dual Pole Breakers	Size
ATS11-15.01-02	120V	15A	1.4 kW	NEMA L5-15P	1	L5-15R (1)	(0)	16.72" X 4.477" X 1.72"
ATS11-20.03-03	120V	20A	1.9 kW	NEMA 5-20P	1	N20(1)	(0)	16.72" X 4.477" X 1.72"
ATS11-20.05-04	120V	20A	1.9 kW	NEMA L5-20P	1	L5-20R(1)	(0)	16.72" X 4.477" X 1.72"
ATS11-30.08-05	120V	30A	2.9 kW	NEMA L5-30P	1	L5-30R(1)	(0)	16.72" X 4.477" X 1.72"
ATS11A-10.13-38	230V	10A	1.8 kW	IEC320 C14P	1	C13R(1)	(0)	16.72" X 4.477" X 1.72"
ATS11A-10.13-62	230V	10A	1.8 kW	CEE 7/7 (SCHUKO)	1	C13R(1)	(0)	16.72" X 4.477" X 1.72"
ATS11A-16.17-53	230V	16A	2.9 kW	IEC60309P (16A)	1	IEC60309R (16A)(1)	(0)	16.72" X 4.477" X 1.72"
ATS11A-20.07-07	208V	20A	3.4 kW	NEMA L6-20P	1	L6-20R (1)	(0)	16.72" X 4.477" X 1.72"
ATS11A-30.09-08	208V	30A	5.8 kW	NEMA L6-30P	1	L6-30R(1)	(0)	16.72" X 4.477" X 1.72"
ATS11A-30.20-36	230V	32A	5.8 kW	IEC60309P (32A)	1	IEC60309R (32A)(1)	(0)	16.72" X 4.477" X 1.72"
ATS12-20.03	120V	20A	1.9 kW	NEMA 5-20P	12	N20(12)	1-20A	16.72" X 6.188" X 1.72"
ATS12-20-04	120V	20A	1.9 kW	NEMA L5-20P	12	N20(12)	1-20A	16.72" X 6.188" X 1.72"
ATS12A-10.14L-38	230V	10A	1.8 kW	IEC320 C14P	12	C13R-L(12)	1-10A	16.72" X 6.188" X 1.72"
ATS12A-16.14L-09	230V	16A	2.9 kW	IEC320 C20P	12	C13R-L(12)	1-16A	16.72" X 6.188" X 1.72"
ATS12A-16.14L-10	230V	16A	2.9 kW	IEC60309P (16A)	12	C13R-L(12)	1-16A	16.72" X 6.188" X 1.72"
ATS12A-20.14L-07	208V	20A	3.4 kW	NEMA L6-20P	12	C13R-L(12)	1-20A	16.72" X 6.188" X 1.72"
ATS12A-20.14L-56	208V	20A	3.4 kW	IEC320 C20P	12	C13R-L(12)	1-20A	16.72" X 6.188" X 1.72"
ATS22A-30.09-08	208V	30A	5.8 kW	NEMA L6-30P	1	L6-30R(1)	(0)	16.72" X 7.145" X 1.72"
ATS22A-30.20-36	230V	32A	5.8 kW	IEC60309P (32A)	1	IEC60309R (32A)(1)	(0)	16.72" X 7.145" X 1.72"
ATS23-20.03-04	120V	20A	1.9 kW	NEMA L5-20P	12	N20(12)	1-20A	16.72" X 8.40" X 1.72"
ATS23-30.03-05	120V	30A	2.9 kW	NEMA L5-30P	12	N20(12)	2-20A	16.72" X 8.40" X 1.72"

Above are the most popular configurations. For different input plug types, user interface or receptacle configurations please contact a BayTech representative.